

Service manual and spare parts list

Tumble dryer T 201 E

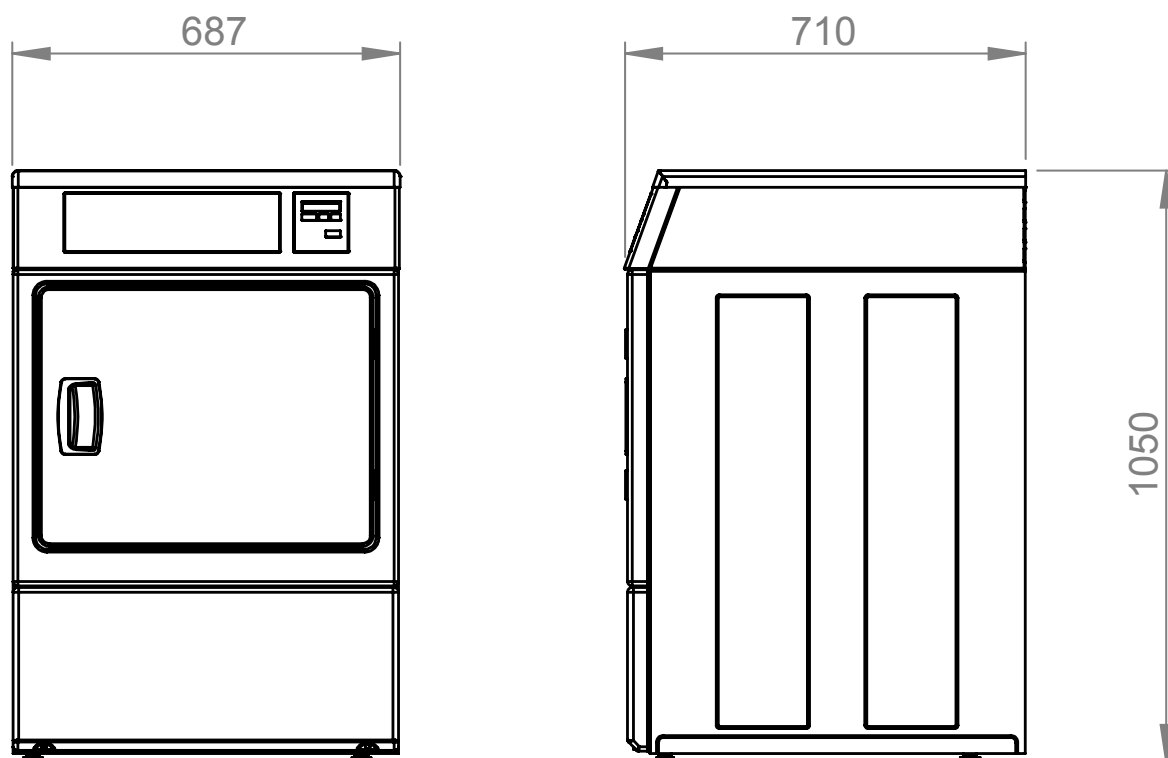
Thank you for choosing our tumble dryer T 201 E. We hope that it will be of great use for you.

Contents

Specifications	4
Dimensions	4
Technical information	4
Main control board	5
Service menu	5
Parameter list	5
Explanation of parameters	6
Error codes	6
Spare parts list	7
Electrical drawing	15

Specifications

Dimensions



Technical information

Loading capacity, kg	10 kg
Drum volume, l	201
Drying capacity, g/min *	72
Drying time, min *	60
Evacuated air, max, m ³ /h	210
Exhaust Ø, mm	100
Electrical connection	3~N, 400 V, 50 Hz
Heating effect, kW	4,5
Total effect, kW	6,3
Energy consumption/kg, kWh*	0,41
Fuse, A	10
Article number	121053
*Drying of 10 kg cotton (dry weight), washed and high-spinned to 43 % residual moisture. Dried to 0 % residual moisture.	

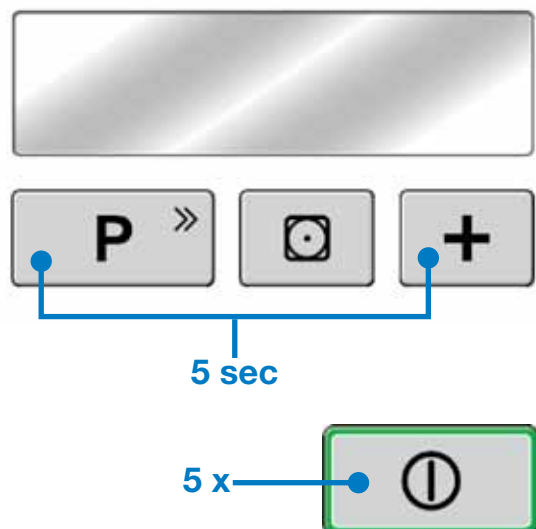
Main control board

Drying cabinet T 201 E can be customized by adjusting the main control board's parameters. The following pages describe how to adjust the parameters.

Service menu

Activate the service menu

To enter the service menu; press both the "P" button and the "+" button for about 5 seconds until the screen shows "SERVICE MENU - T201E". Push the START button, 5 times continuously, to enter the parameter list.



Navigate in the service menu

The parameter names are shown on row 1 and 2 on the screen. The value is shown on the bottom row. Use the "P" button to browse in the parameter list.

Change parameter values

The "+" button increases a numeric value and is used for toggling ON/OFF functions. The "GENTLE CARE" button can be used to decrease numeric values.

Leave the service menu

To leave the service menu, push the "START" button.

Parameter list

The table below shows the parameter names, alternatives and default values.

Parameter	Alternative	Factory position
SOFTWARE VERSION	-	[version name]
RESET	YES	-
NORMAL TEMPERATURE	40-45	42
TEMPERATURE GENTLE DRYING	35-39	38
ADJUSTMENT AUTOMATIC DRYING	[-0,15]-[+0,15]	0
IRON DRY	ON/OFF	ON
SLIGHTLY DRY	ON/OFF	ON
CABINET DRY	ON/OFF	ON
EXTRA DRY	ON/OFF	ON
TIMED DRYING	ON/OFF	ON
MAXIMUM TIME	0:30-10:00	02:00
DELAY START	ON/OFF	OFF
CHILD LOCK	ON/OFF	OFF
SOUND	ON/OFF	ON
LOGOTYPE	ON/OFF	ON
LANGUAGE	SWEDISH/NORWEGIAN/ DANISH/ENGLISH/ FRENCH/GERMAN/ SPANISH	ENGLISH
COIN	ON/OFF	OFF
COIN SIGNAL TYPE	NORMALLY OPENED/ NORMALLY CLOSED/ PULSE	NORMALLY OPENED
OPERATING HOURS	-	[shows operating h]
ERROR LOG	-	[shows latest errors]

Explanation of parameters

SOFTWARE VERSION

The name of the installed software file is shown.

RESET

Only shown if any parameter's default value has been changed. If option "YES" is pushed, all the parameters are reset to their factory position. Note! The error log is cleared at reset.

NORMAL TEMPERATURE

Setting of the normal drying temperature for all programs.

TEMPERATURE GENTLE DRYING

Setting of the gentle drying temperature.

ADJUSTMENT AUTOMATIC DRYING

Adjusts the automatic drying function. Can be changed if needed. If the value is decreased (negative value), the drying time is prolonged for all automatic programs.

IRON DRY

Turns the "IRON DRY" program ON/OFF in user mode.

SLIGHTLY DRY

Turns the "SLIGHTLY DRY" program ON/OFF in user mode.

CABINET DRY

Turns the "CABINET DRY" program ON/OFF in user mode.

EXTRA DRY

Turns the "EXTRA DRY" program ON/OFF in user mode.

TIMED DRYING

Turns the "TIMED DRYING" program ON/OFF in user mode.

MAXIMUM TIME

Controls the maximum time that can be set at timed drying. The parameter also controls the maximum drying time for the automatic programs.

DELAY START

This parameter activates delayed start. If the parameter is set to "ON" the user is given the choice to delay the program start with up to 24:00h.

CHILD LOCK

It is possible to activate a child lock function. When set to "ON" the user has to press and hold the "P" button while pushing start.

SOUND

In mode "ON" there is a beep sound every time an active button is pushed or when a drying program is finished.

LOGOTYPE

Turns the PODAB-logo, shown on the welcome screen, ON/OFF.

Language

The dryer has seven languages.

COIN

The dryer can be connected to a booking system. To activate the function, set the parameter in position "ON". To start a program a signal to the COIN plinth is needed.

COIN SIGNAL TYPE

This parameter is only visible if COIN is activated. COIN is used when the dryer is connected to a booking system. Choose position depending on which type of signal the booking system is sending.

NORMALLY OPENED should be chosen when there is a signal to the COIN plinth when the dryer has been booked. A running program will finish even if the signal is interrupted.

NORMALLY CLOSED should be chosen when there is a signal to the COIN plinth when the dryer has not been booked.

PULSE means that the cabinet is booked per drying period. One pulse gives one drying period.

OPERATING HOURS

The parameter shows the total amount of hours the dryer has been running. Saved on the memory unit even if the power to the control board is cut.

ERROR LOG

Up to 10 errors can be memorized in the error log. If the log is empty the screen shows the text "EMPTY". If there are codes that has been logged it is possible to toggle with the P button. When all errors has been displayed the log can be cleared.

Error codes

TEMP SENSOR FAILURE

The control board gets no signal from the temperature sensor (0110165). The dryer is out of function until the error is solved.

Check if the sensor is connected correctly on the main control board, and that the cable from the sensor to the board is intact.

MAX TIME REACHED

This code is generated if the maximum drying time of 2h (default) is reached.

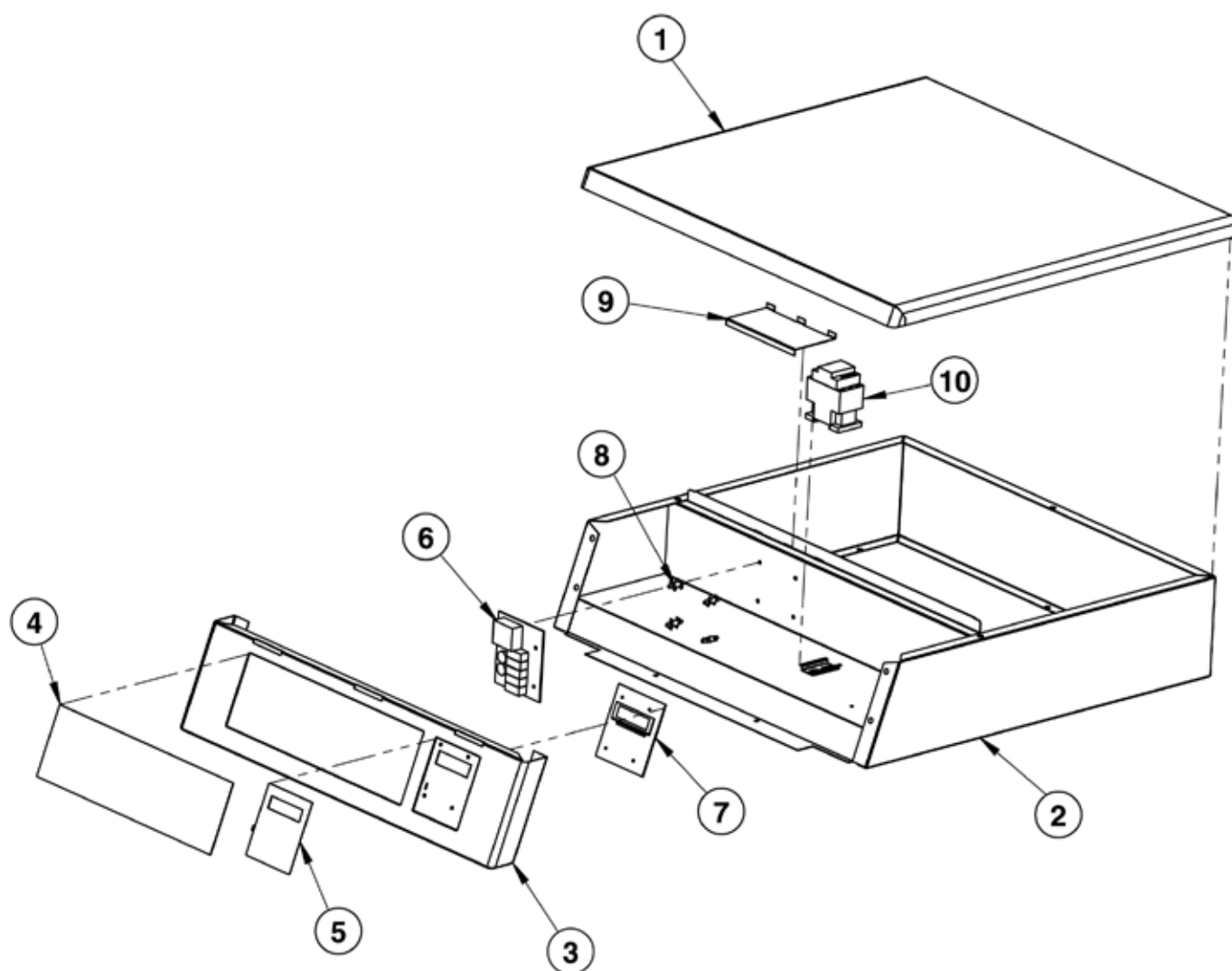
The drying time can exceed the limit if the dryer is over loaded or if the textiles has a very high residual moisture level when the program starts. If desired the maximum time can be adjusted up to 10:00h.

ΔT

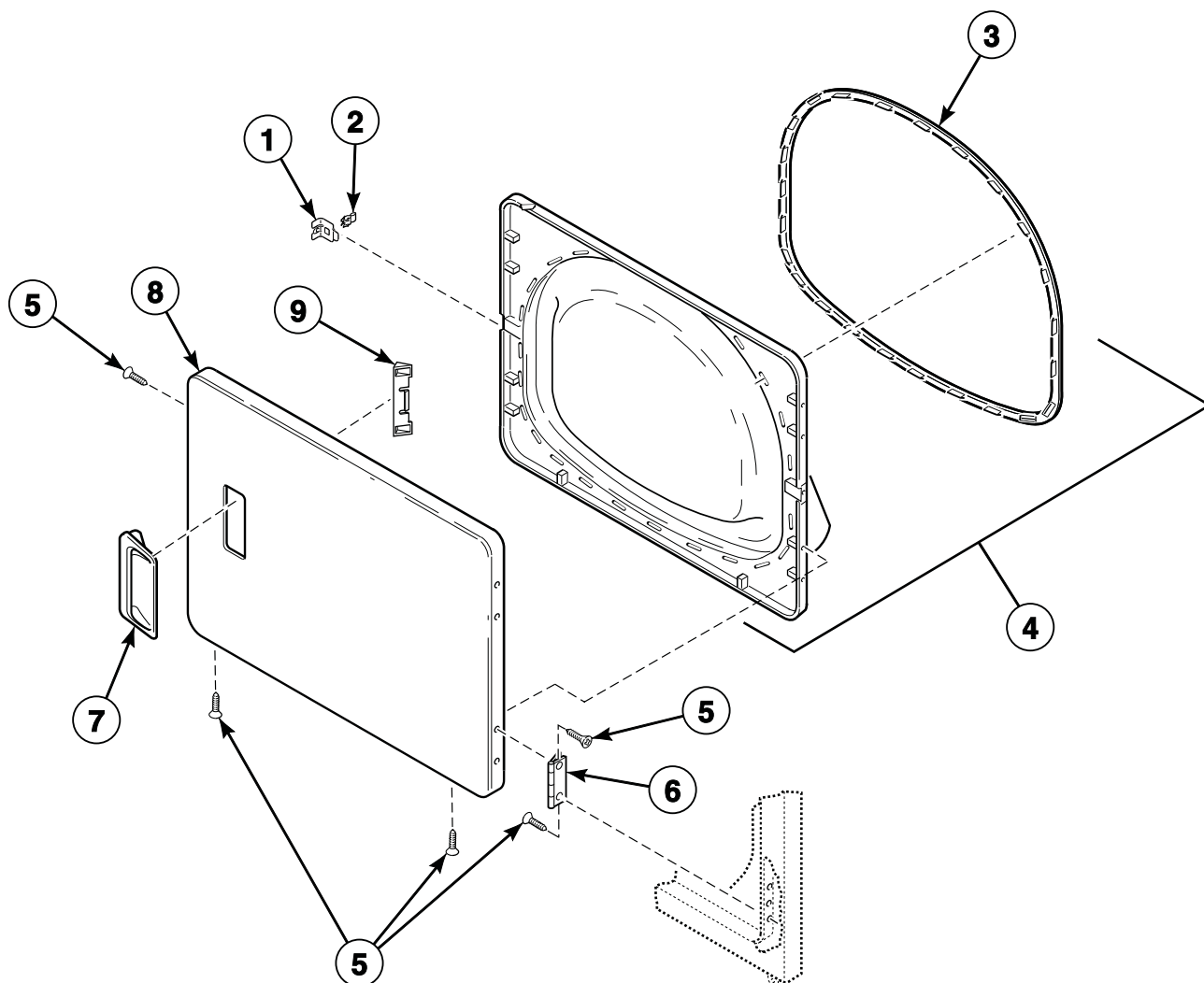
There is a stop function in the software that detects if the dryer is running empty or with very little load. When the criteria for ΔT has been detected the dryer stops and the code is generated.

No action needed. The purpose of the code is to see how often the stop function has been activated.

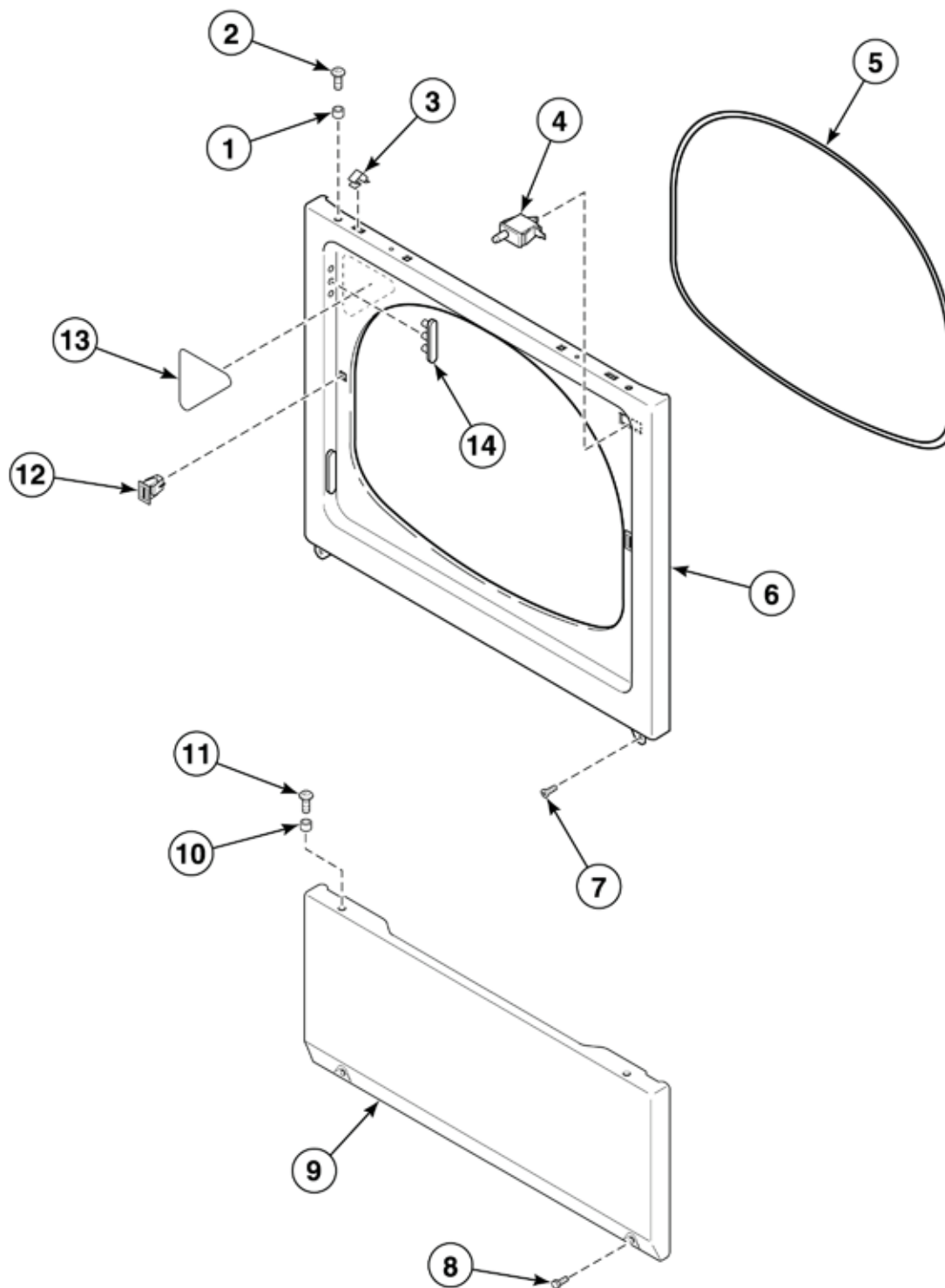
Spare parts list



No	Part No	Description
1	0110166	Top plate
2	0110167	Top frame
3	0110168	Front panel
4	501003	Front panel sticker, T201E
5	0110162	Keyboard membrane, T201E
6	0110160	Relay board, T201E
7	0110161	Print board, T201E
8	0110169	Print board distance
9	0110170	Protection plate
10	504142	Contactor, 230V, 12A

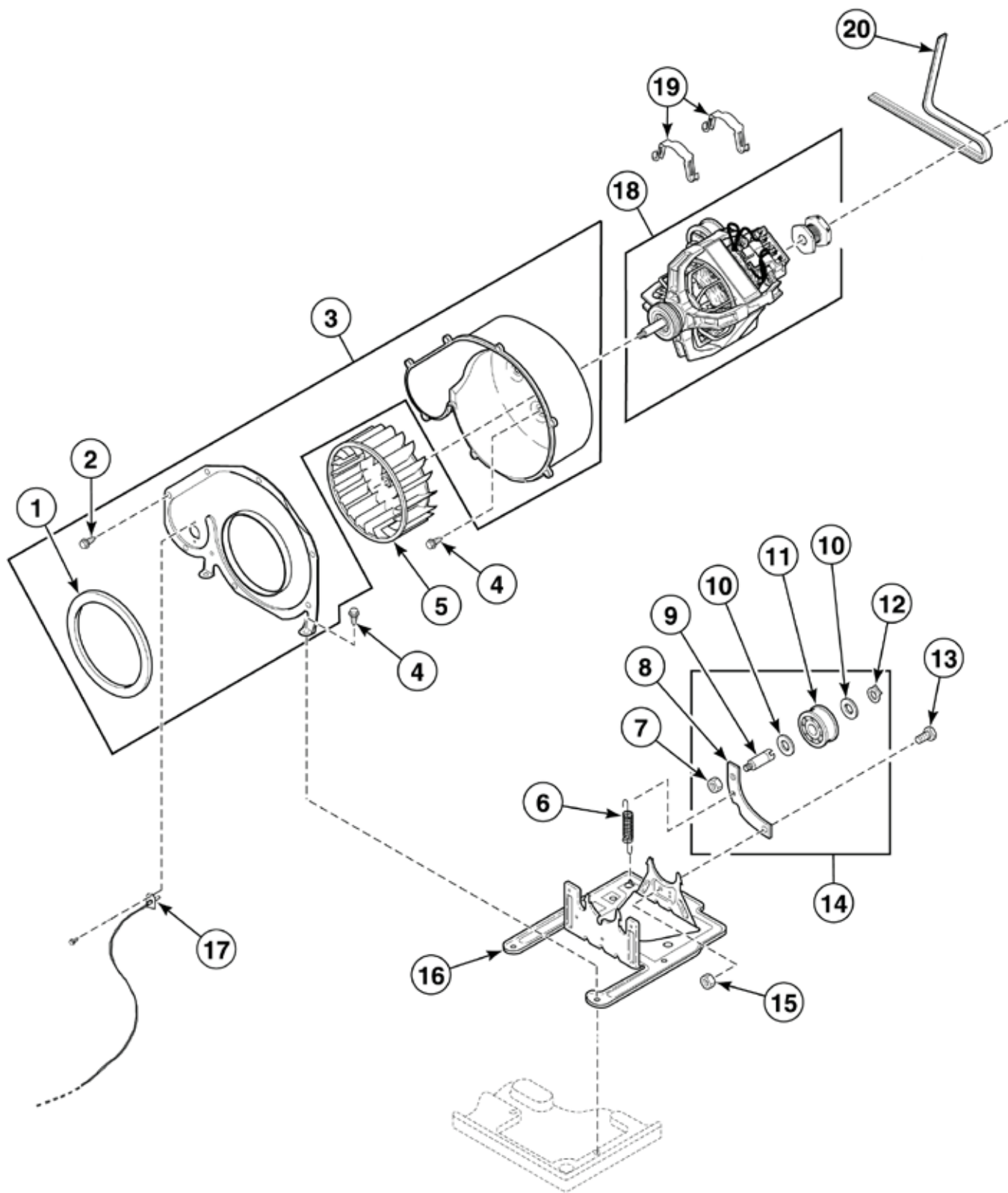


No	Part No	Description
1	510127	Door Striker Bracket
2	510181	Door Striker
3	510147P	Door Seal
4	510163	Inner Door Panel and Seal Assembly
5	505295	Screw
6	511036	Door Hinge
7	511213P	Door Pull
8	510066	Outer Door Panel
9	510129	Wedge



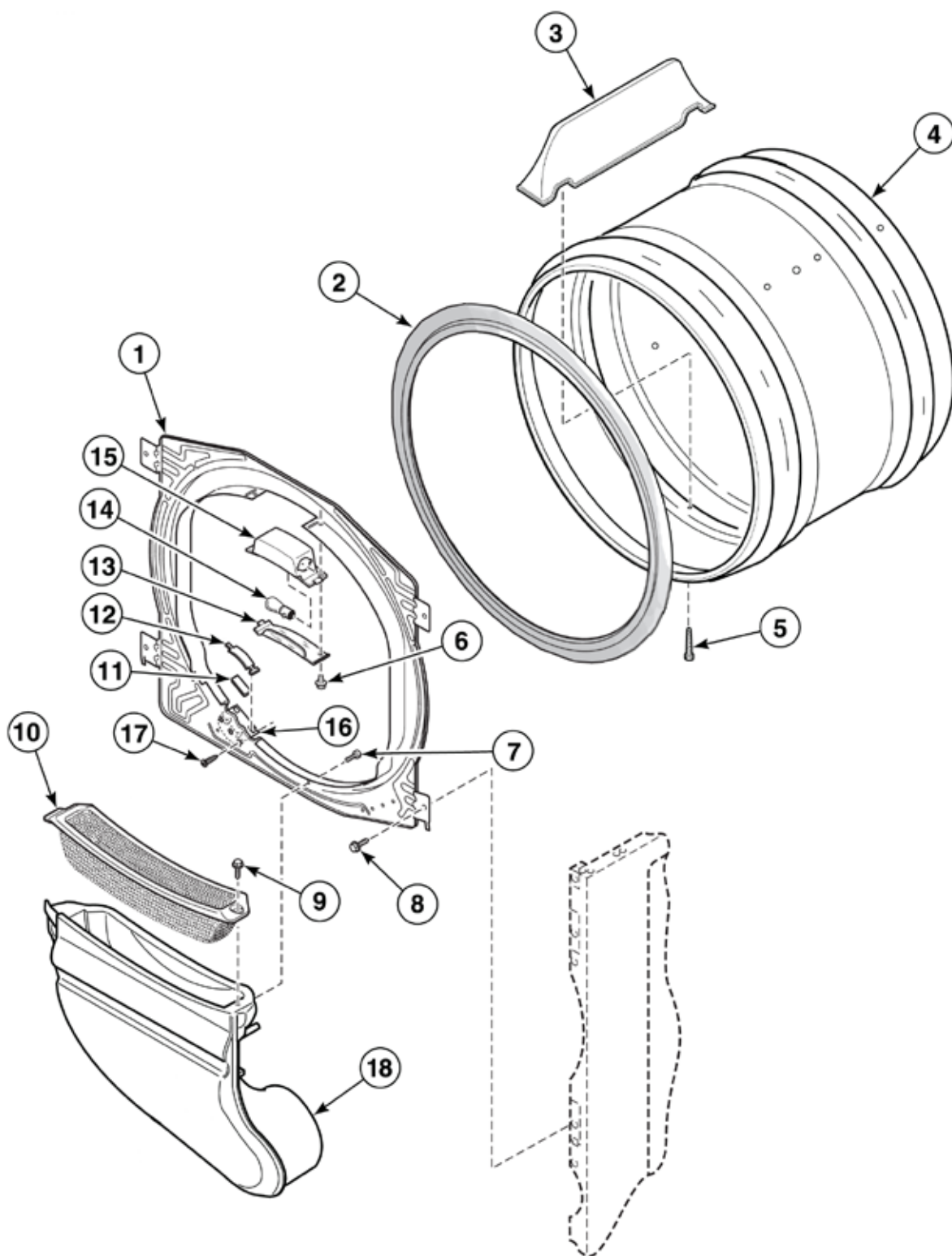
No	Part No	Description
1	56079	Locator
2	32671	Screw
3	28835	Hold-down Clip
4	504570	Door Switch
5	511056	Front Panel Seal
6	510066	Front Panel
7	503688	Screw

No	Part No	Description
8	33562	Screw
9	510069	Access Panel
10	56079	Locator
11	32671	Screw
12	510177	Door Catch
13	500281	Label



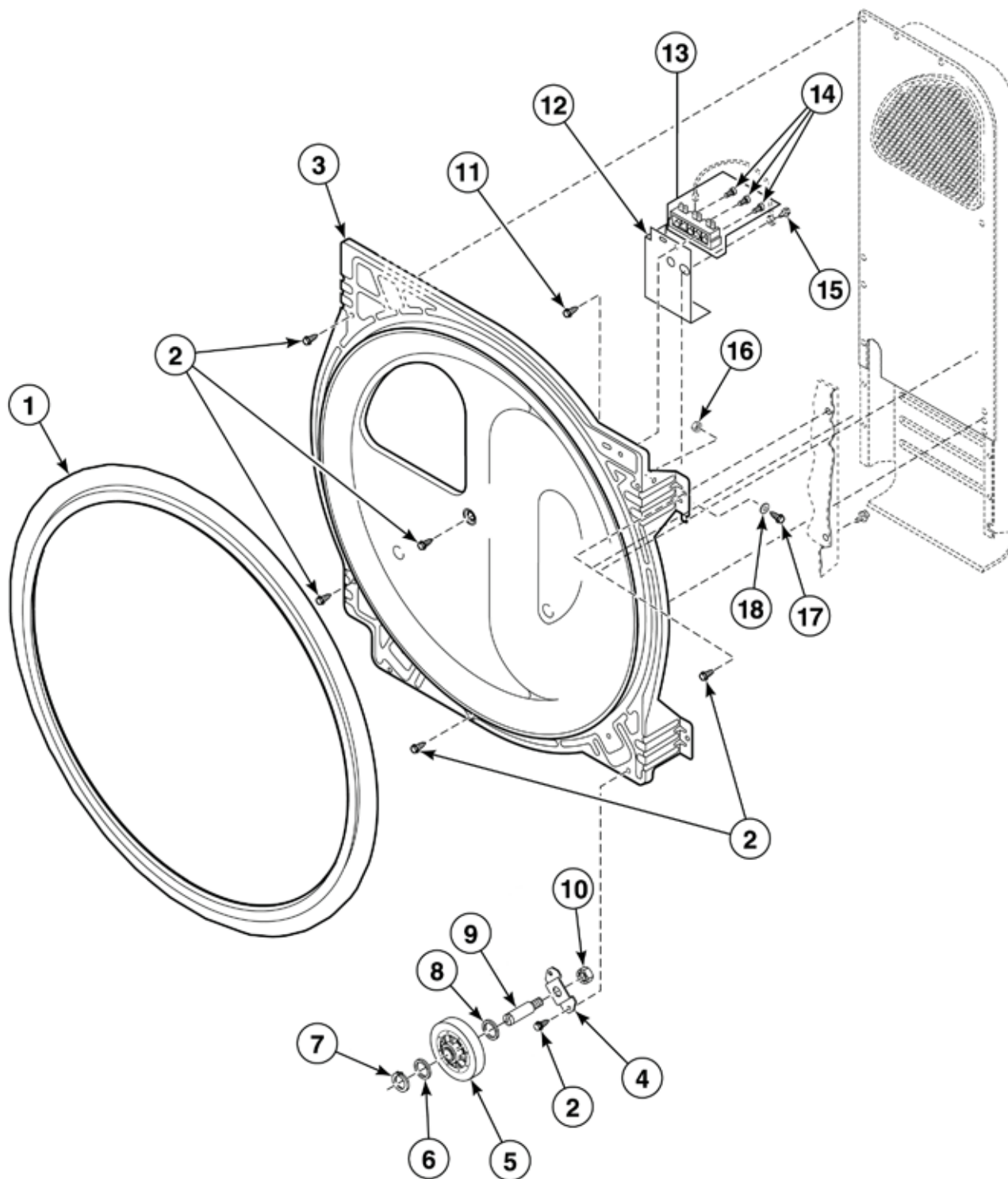
No	Part No	Description
1	510238	Seal
2	31260	Screw
3	511696P	Blower housing and cover kit
4	503688	Screw
5	510139	Exhaust Fan Impeller
6	510185	Spring
7	56156	Lock nut
8	510133	Idler Lever
9	56461	Shaft
10	52549	Washer

No	Part No	Description
11	510142	Idler Pulley
12	23748	Retainer Ring
13	510185	Shoulder Bolt
14	510158	Idler Pulley and Lever Assembly
15	52566	Lock nut
16	510060	Motor Mounting Bracket
17	0110165	Temperature Sensor, T201E
18	505843P	Motor Assembly
19	510180	Motor Mounting Clamp
20	511255P	Belt



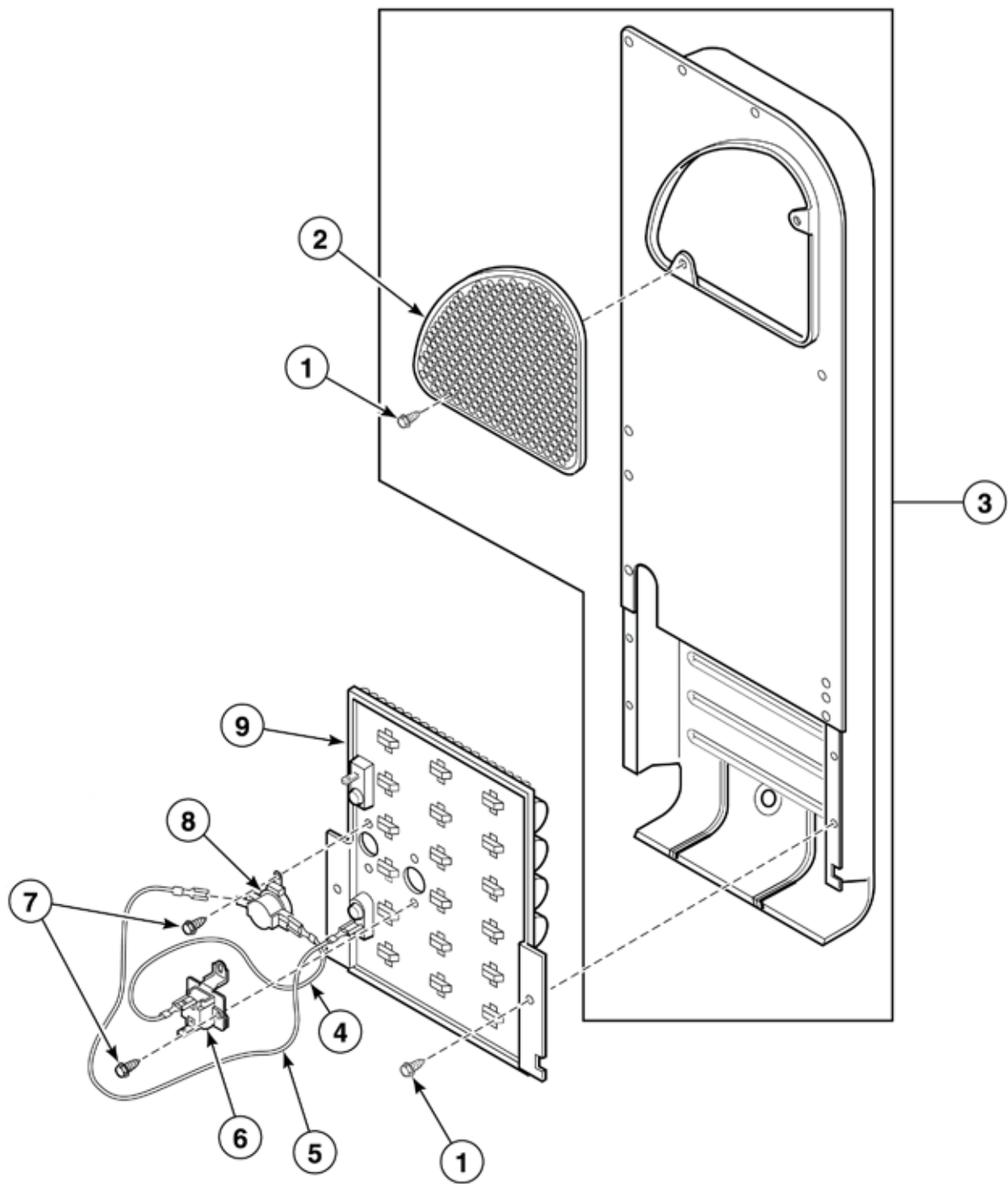
No	Part No	Description
1	510266P	Front Bulkhead
2	510207P	Cylinder Seal
3	510102	Baffle
4	510265P	Cylinder Assembly
5	62588	Screw
6	500227	Screw
7	505295	Screw
8	503688	Screw
9	501285	Screw

No	Part No	Description
10	503980	Lint Filter
11	510189	Felt pad
12	510187	Cylinder Glide
13	503623	Drum Light Lens
14	503579	Drum Light Lamp
15	504452	Cylinder Light Assembly
16	510145	Cylinder Glide Bracket
17	52862	Screw
18	510151	Air Duct Assembly

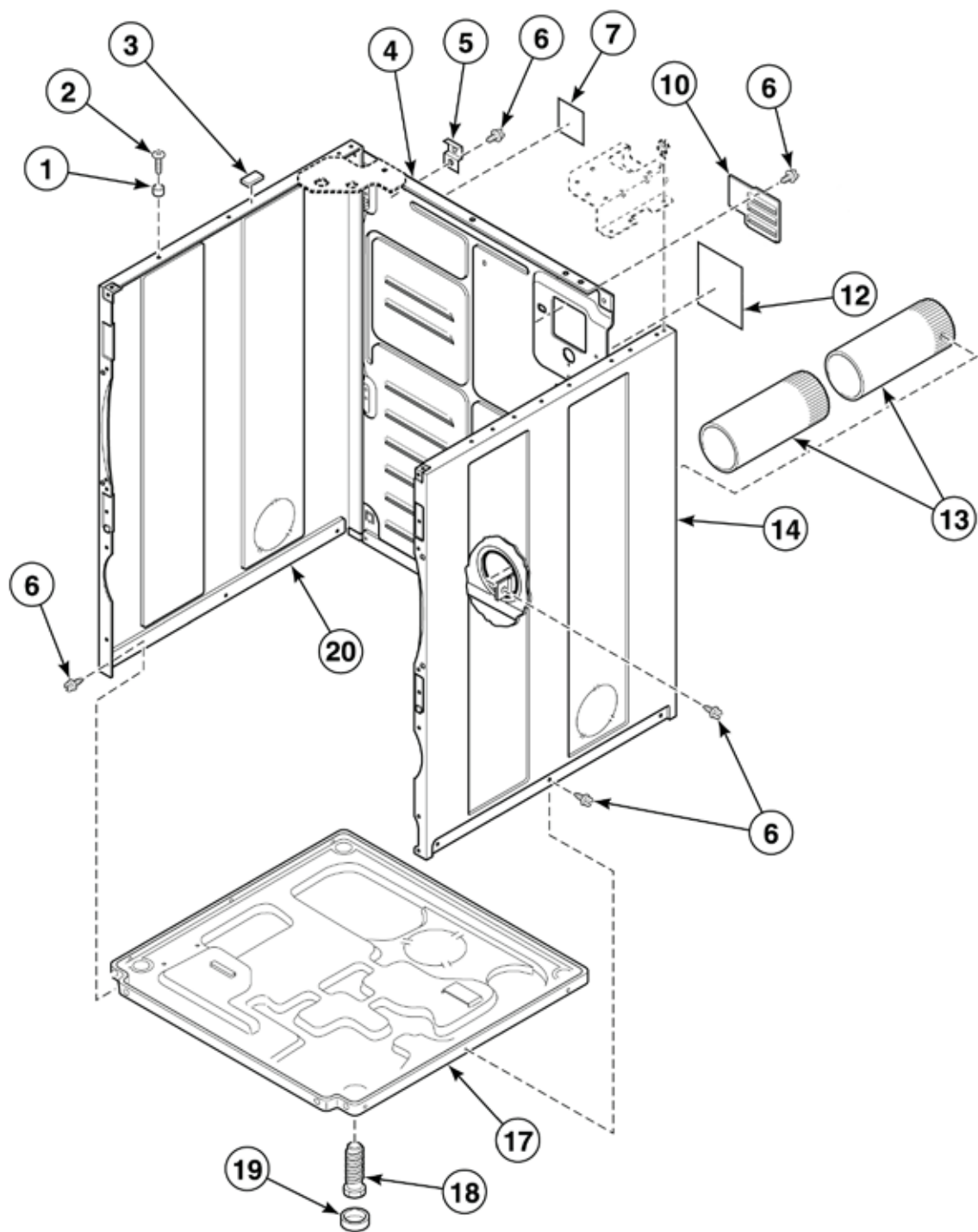


No	Part No	Description
1	510207P	Cylinder Seal
2	503688	Screw
3	505244	Rear Bulkhead
4	510100	Roller Bracket
5	510708P	Cylinder Roller
6	52549	Washer
7	23748	Retainer Ring
8	504082	Wave Washer
9	56461	Shaft
10	56156	Nut

No	Part No	Description
11	501285	Screw
12	510237	Shield
13	510190P	Terminal Block
14	61199	Screw
15	503688	Screw
16	28447	Screw
17	28448	Screw
18	28449	Washer



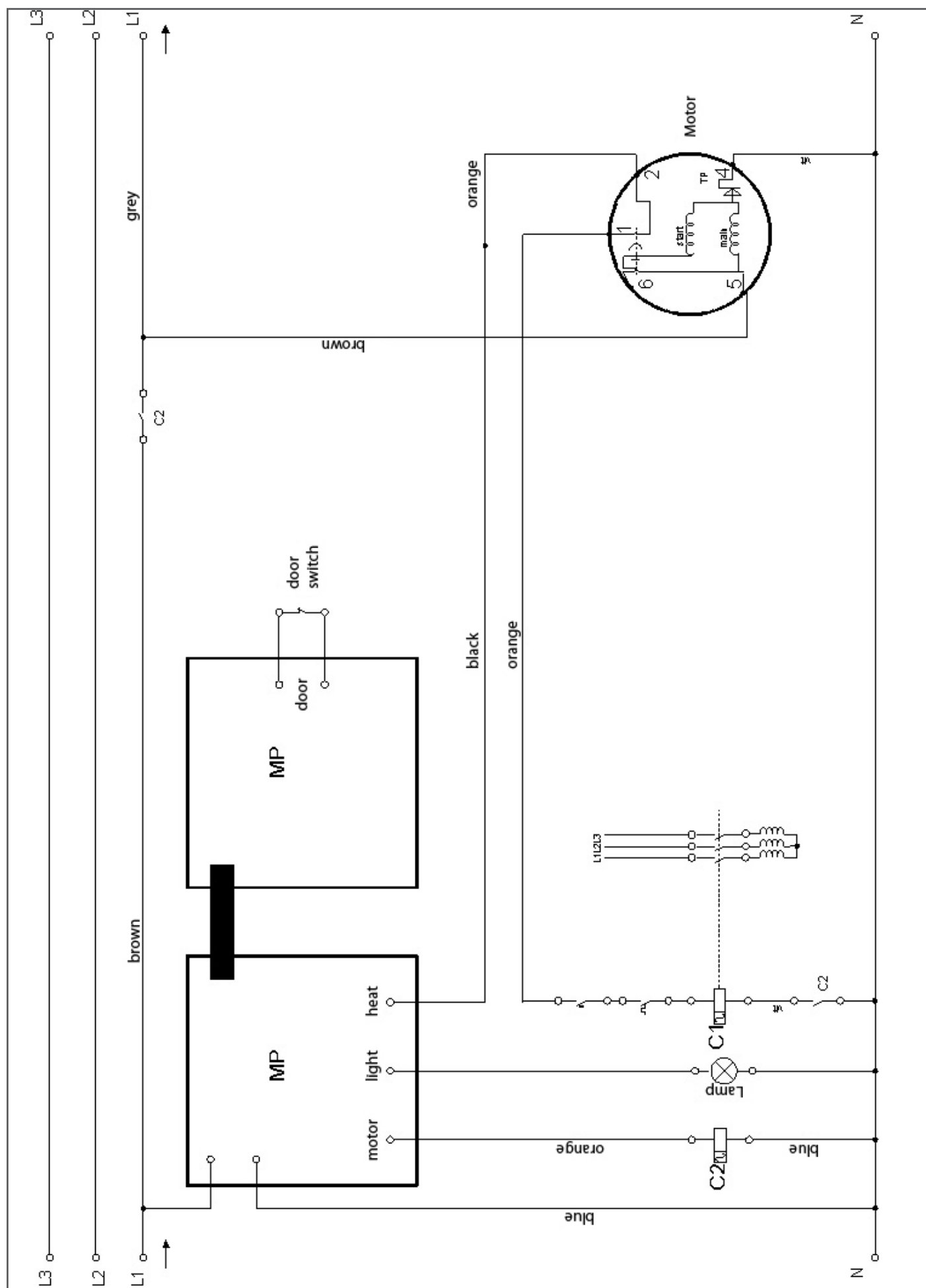
No	Part No	Description
1	503688	Screw
2	500820	Outlet Cover
3	510025P	Heater Duct Assembly
4	510528	Wire Assembly
5	510527	Wire Assembly
6	511412	Thermal Fuse
7	23222	Screw
8	510701	Limit Thermostat
9	511014P	Heater Assembly, 3~ 4,5 kW 380V



No	Part No	Description
1	56079	Locator
2	32671	Screw
3	56128	Bumper
4	510005	Cabinet Panel
5	510136	Top Hinge
6	503688	Screw
7	500670	Label
10	510903	Access Cover Plate
12	501289	Label

No	Part No	Description
13	510137	Exhaust Duct
14	510002	Cabinet Panel
17	510084	Base
18	510135	Leveling Leg
19	501855	Rubber Foot
20	510001	Cabinet Panel

Electrical drawing



SERVICE/SUPPORT

Phone +46 31-752 01 00

Fax +46 31-752 01 50

E-mail parts@podab.se

www.podab.com



AB PODAB, Ekonomivägen 9, 436 33 Askim, SWEDEN
Tel +46 (0)31-752 01 00, Fax +46 (0) 31-752 01 50 E-mail: sales@podab.se, www.podab.com

©PODAB 2012-09-24