

# Service manual and spare parts list

Drying cabinet ProLine TS 63 E

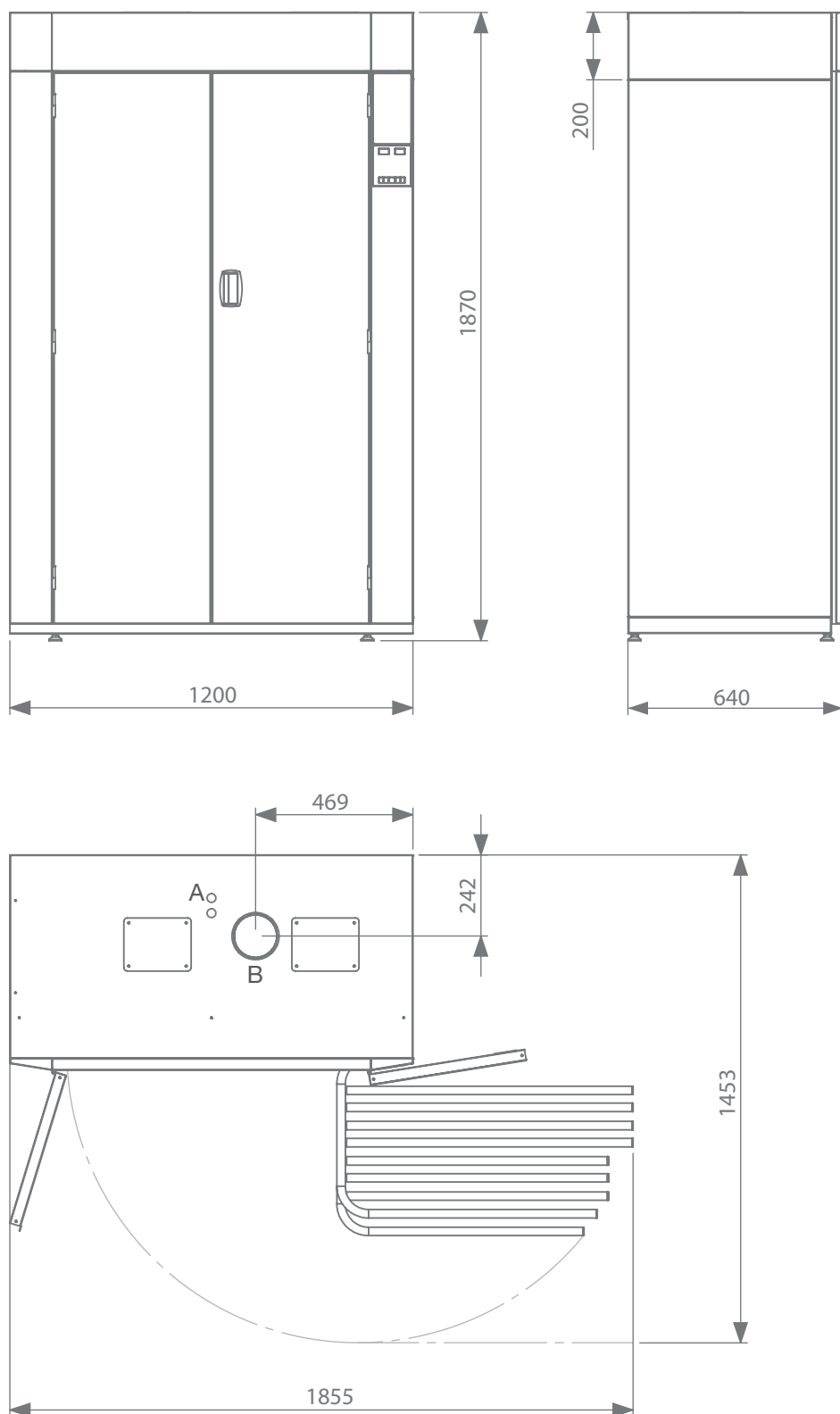
Thank you for choosing this drying cabinet TS 63 E from PODAB.  
We hope that it will be of great use for you.

# Contents

<b>Specification</b>	<b>4</b>
Dimensions	4
Technical information	5
<b>Main control board</b>	<b>5</b>
Setup menu	5
Parameter list	6
Explanation of parameters	6
Error messages	7
<b>Spare parts list</b>	<b>8</b>
Cabinet	8
Top	9
<b>Electrical drawing</b>	<b>10</b>

# Specification

## Dimensions



A = Electrical connection

B= Exhaust

## Technical information

Loading capacity, kg (lb)	up to 8 (17,6)
Drying capacity, g/min (oz/min)*	62 (2,2)
Hanging length, m (ft)	16 (52,5)
Drying time, min*	42
Evacuated air, max, m³/h (ft³/h)	340 (12007)
Exhaust Ø, mm (in)	125 (4,92)
Heating effect, kW	6,0
Total effect, kW	6,3
Energy consumption, kWh/kg (kWh/lb)*	0,50 (0,23)
Part No	131032
*Drying of 6 kg (13,2 lb) cotton (dry weight), washed and high-spinned to 43% residual moisture. Dried to 0 % residual moisture.	

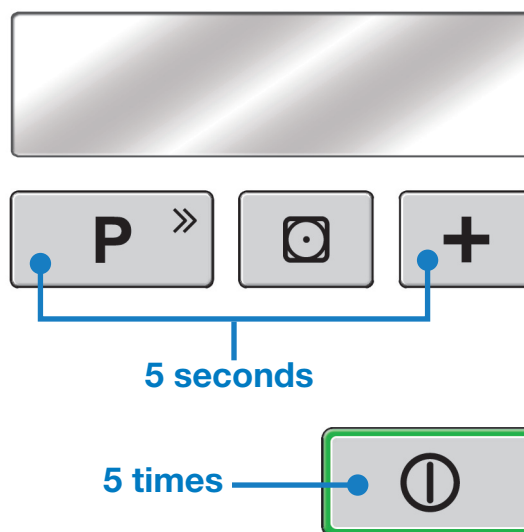
## Main control board

Drying cabinet TS 63 E can be customized by adjusting the main control board's parameters. The following pages describe how to adjust the parameters.

### Setup menu

#### Activate the setup menu

To enter the setup menu; press both the "P" button and the "+" button for about 5 seconds until the screen shows "SETUP MENU - TS63E". Push the START button, 5 times continuously, to enter the parameter list.



#### Navigate the setup menu

The parameter names are shown on row 1 and 2 on the screen. The value is shown on the bottom row. Use the "P" button to browse in the parameter list.

#### Change parameter values

The "+" button increases a numeric value and is used for toggling ON/OFF functions. The "GENTLE CARE" button can be used to decrease numeric values.

#### Leave the setup menu

To leave the menu, push the "START" button.

## Parameter list

Parameter	Alternative	Factory position
SOFTWARE VERSION	-	[version name]
RESET	YES	-
NORMAL TEMPERATURE	70-90	80
TEMPERATURE GENTLE DRYING	50-70	60
HYSTERESIS	5-10	10
COOL DOWN	5-15	10
ΔF STOP AUTOMATIC DRYING	-50 % -> +50 %	0
IRON DRY PR1	ON/OFF	ON
SLIGHTLY DRY PR2	ON/OFF	ON
CABINET DRY PR3	ON/OFF	ON
EXTRA DRY PR4	ON/OFF	ON
TIMED DRYING PR5	ON/OFF	ON
MAXIMUM TIME	0:30h-10:00h	3:00h
DELAY START	ON/OFF	OFF
CHILD LOCK	ON/OFF	OFF
SOUND	ON/OFF	ON
LOGOTYPE	ON/OFF	ON
LANGUAGE	SVENSKA/NORSK/DANSK/ ENGLISH/FRANÇAIS/ DEUTSCH/ESPAÑOL	ENGLISH
COIN	ON/OFF	OFF
COIN SIGNAL TYPE	NORMALLY OPENED/NOR- MALLY CLOSED/PULSE	NORMALLY OPENED
OPERATING HOURS	-	00000h
ERROR LOG	-	EMPTY

## Explanation of parameters

### SOFTWARE VERSION

The name of the installed software file is shown.

### RESET

Only shown if any parameter's default value has been changed. If option "YES" is pushed, all the parameters are reset to their factory position.

### NORMAL TEMPERATURE

Setting of the normal drying temperature for all programs.

### TEMPERATURE GENTLE DRYING

Setting of the gentle drying temperature.

### HYSTERESIS

Controls the hysteresis. TS 63 E is preset to 10°C. When the working temperature is attained the heating elements are turned off. When the temperature has dropped 10°C the heating starts again.

### COOL DOWN

After the heating phase, the cabinet has a period of cool down to recondition the laundry and lower the temperature within the cabinet.

### ΔF STOP AUTOMATIC DRYING

Adjusts the automatic drying function. Can be changed if needed. If the value is decreased (negative value), the drying time is prolonged for all automatic programs.

### IRON DRY

Turns the "IRON DRY" program ON/OFF in user mode.

### SLIGHTLY DRY

Turns the "SLIGHTLY DRY" program ON/OFF in user mode.

### CABINET DRY

Turns the "CABINET DRY" program ON/OFF in user mode.

### EXTRA DRY

Turns the "EXTRA DRY" program ON/OFF in user mode.

### TIMED DRYING

Turns the "TIMED DRYING" program ON/OFF in user mode.

### MAXIMUM TIME

Controls the maximum time that can be set at timed drying. The parameter also controls the maximum drying time for the automatic programs.

### DELAY START

This parameter activates delayed start. If the parameter is set to "ON" the user is given the choice to delay the program start with up to 24:00h.

## CHILD LOCK

It is possible to activate a child lock function. When set to "ON" the user has to press and hold the "P" button while pushing start.

## SOUND

In mode "ON" there is a beep sound every time an active button is pushed or when a drying program is finished.

## LOGOTYPE

Turns the PODAB-logo, shown on the welcome screen, ON/OFF.

## LANGUAGE

The cabinet has seven languages.

## COIN

The cabinet can be connected to a booking system. To activate the function, set the parameter in position "ON". To start a program a signal to the COIN plinth is needed.

## COIN SIGNAL TYPE

This parameter is only visible if COIN is activated. COIN is used when the cabinet is connected to a booking system. Choose position depending on which type of signal the booking system is sending.

NORMALLY OPENED should be chosen when there is a signal to the COIN plinth when the cabinet has been booked. A running program will finish even if the signal is interrupted.

NORMALLY CLOSED should be chosen when there is a signal to the COIN plinth when the cabinet has not been booked.

PULSE means that the cabinet is booked per drying period. One pulse gives one drying period.

## OPERATING HOURS

The parameter shows the total amount of hours the cabinet has been running. Saved on the memory unit even if the power to the control board is cut.

## ERROR LOG

Error messages are memorized in a log. If the log is empty the screen shows the text "EMPTY". If there are messages that have been logged it is possible to toggle with the P button. When all errors have been displayed the log can be cleared.

## Error messages

### TEMP SENSOR FAILURE

The control board gets no signal from the temperature sensor. The cabinet is out of function until the error is solved. Check if the sensor is connected correctly on the main control board, and that the cable from the sensor to the board is intact.

### MAX TEMP REACHED

If the temperature registered by the temperature sensor rises above 100°C a cool down period starts. The heat is reactivated when the temperature has dropped to 50°C.

### OVERHEATING

The control board's electronically overheat protection has been activated. The error code is generated if the temperature registered by the temperature sensor rises above 100°C, twice within 30 minutes.

Control that the fan motors are working as they should. Also control the temperature sensor and that the cable from the board is intact.

### MAX TIME REACHED

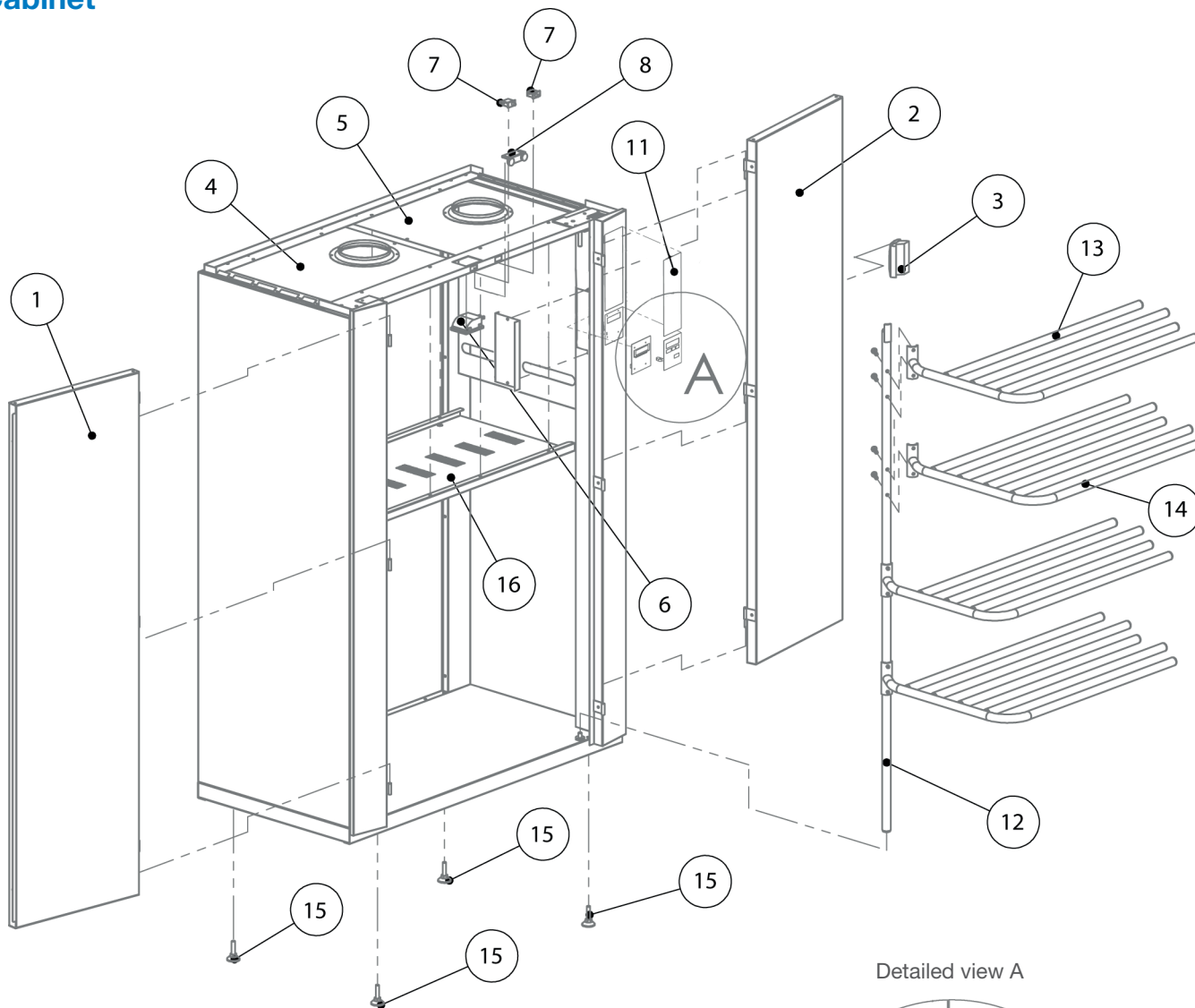
This code is generated if the maximum drying time of 3h (default) is reached. The drying time can exceed the limit if the cabinet is over loaded or if the textiles has a very high residual moisture level when the program starts. If desired the maximum time can be adjusted.

### HUMIDITY SENSOR

Control board gets no signal from the temperature sensor. Control that the sensor is connected correctly on the main control board and that the cable from the sensor to the board is intact

# Spare parts list

## Cabinet

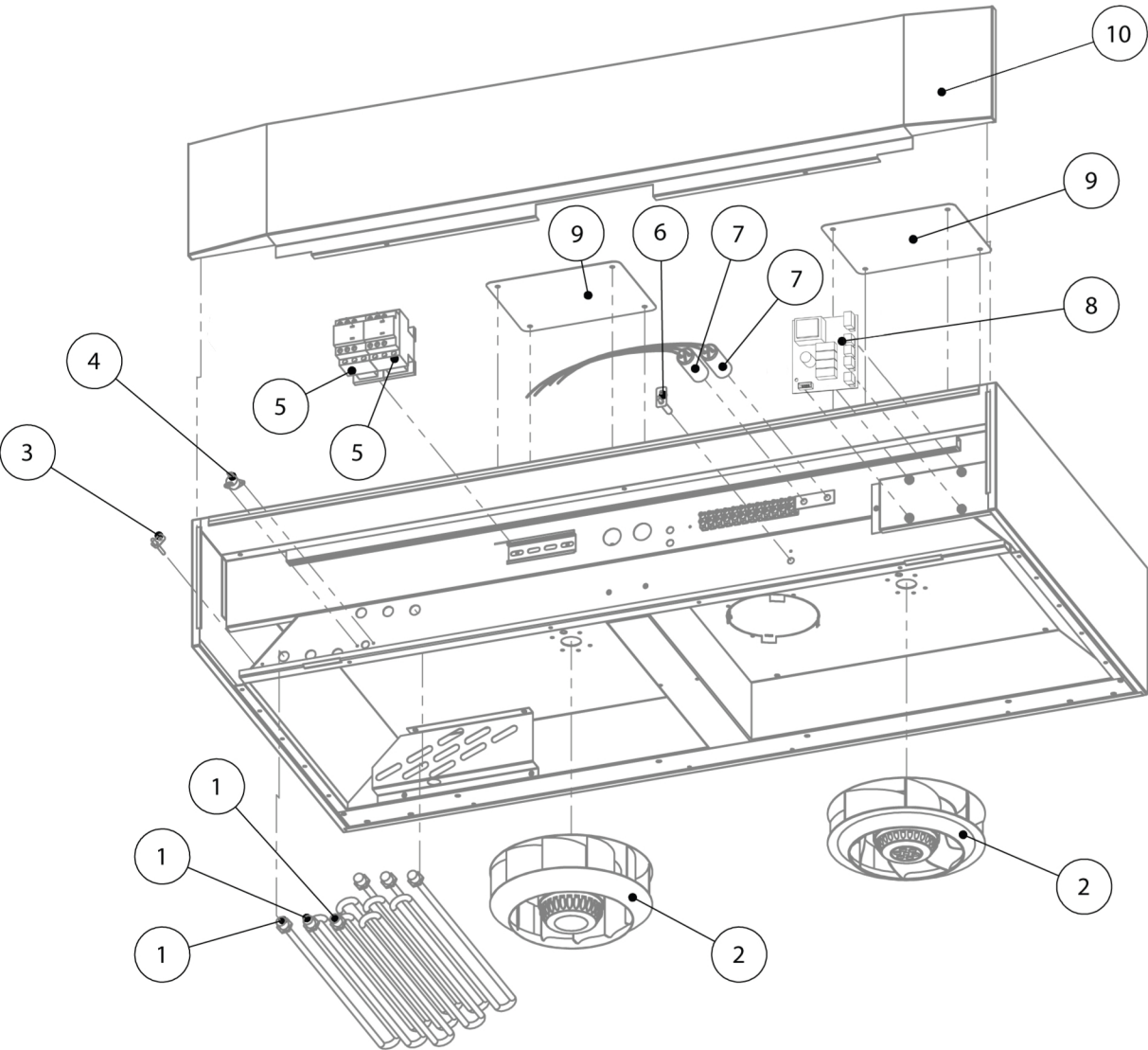


Detailed view A

No	Part No	Description
1	TS 61084	Door left
2	TS 61085	Door right
3	TS 61086	Handle
4	TS 61099	Service door lower, left
5	TS 61096	Service door lower, right
6	TS 61081	Lamp/Bulb
7	70107001	Door switch
8	TS 61089	Magnet list
9	0110161	Main control board
10	0110162	Keypad
11	011065	Sticker user manual
12	TS 61091	Hanging frame
13	TS 61093	Hanging level 4-arms
14	TS 61092	Hanging level 5-arms
15	TS 61094	Foot
16	TS 61097	Protection plate

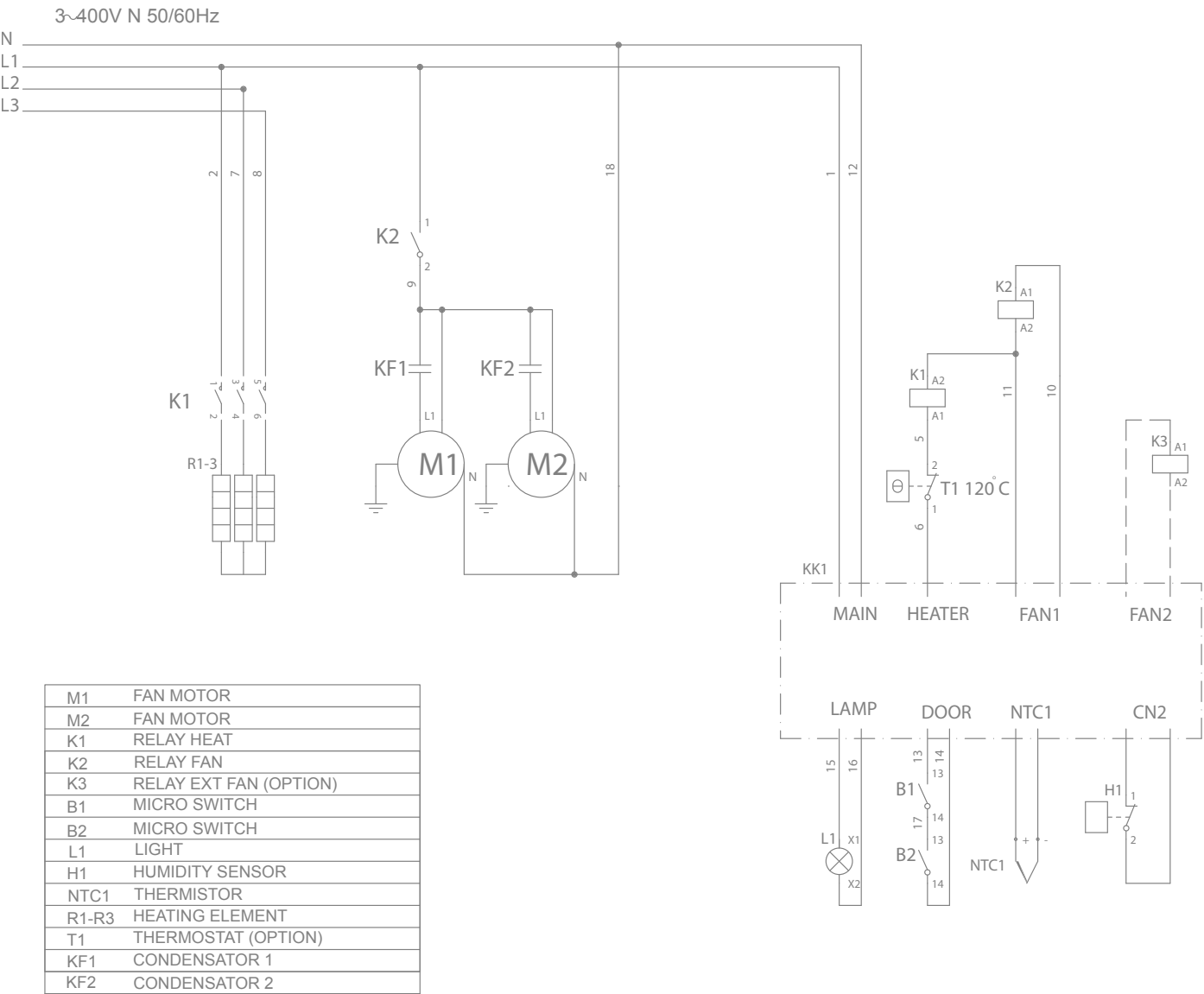


Top



No	Part No	Description
1	TS 61080	Element 2000 W
2	E 150020	Fan motor
3	0110165	Temperature sensor
4	TS 61026	Over heat protection 120°C
5	TS 61062	Contactor LC1-K0610M72
6	0110174	Humidity sensor
7	TS 61083	Condenser
8	0110160	Relay board
9	TS 61098	Service door upper
10	TS 61099	Front panel

# Electrical drawing



I0528105-2



## SERVICE/SUPPORT

Phone +46 31-752 01 00

Fax +46 31-752 01 50

E-mail [parts@podab.se](mailto:parts@podab.se)

[www.podab.com](http://www.podab.com)



AB PODAB, Ekonomivägen 9, 436 33 Askim, SWEDEN  
Tel +46 (0)31-752 01 00, Fax +46 (0) 31-752 01 50 E-mail: [sales@podab.se](mailto:sales@podab.se), [www.podab.com](http://www.podab.com)

©PODAB 2015-06-29