

Dryer line room kit

Installation Instructions



Kit Components

- 2 wall brackets with turnbuckles
- 6 double wall brackets
- 8 single wall brackets
- 100 m (328 ft) plastic-coated steel wire, Ø 5 mm (3/16 in)
- 50 plastic distance clips
- 2 wire locks, 5 mm (3/16 in)

01/2025
Product no. 141004



- This product is intended for drying textiles only.
- Incorrect installation may cause the wire to loosen or become damaged.
- Ensure that all brackets are securely fastened to the wall.
- Do not exceed the recommended maximum load.
- Keep children away from the wire – risk of injury or strangulation.
- This instruction manual must remain with the product.

Installation

- 1. Positioning and Direction** - Install the drying line units in the direction of the airflow to ensure proper air circulation between garments.
If the lines are mounted across the airflow, drying time will increase significantly.
- 2. Mounting Height** - Install the brackets and wire at a height of approximately 1.8 m (5 ft 11 in) above floor level.
- 3. Bracket Installation** - Use suitable wall fasteners depending on the wall material (e.g. bolts with plastic plugs for concrete or brick walls).

Note: The brackets must be securely fastened to withstand the load.

- 4. Wire Pre-Tensioning** - Before installing the wire, ensure that the turnbuckles (A) and tension locks are fully unscrewed to allow for final tension adjustment.

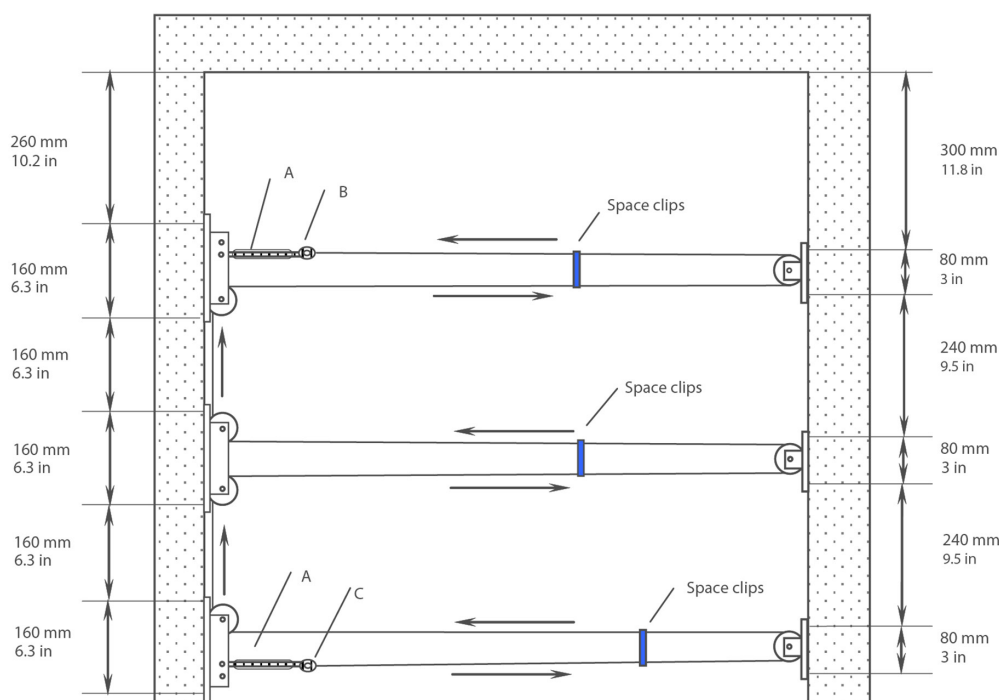
5. Wire Installation

- Guide the wire through the brackets as indicated by the arrows.
- Make sure the wire is not twisted and that no slack occurs.
- Secure the wire by tightening wire lock (B).

6. Wire Tensioning

- Tension the wire and lock it using wire lock (C).
- Perform final tensioning by gradually tightening both turnbuckles.

- 7. Distance Clip Installation** - Install the plastic distance clips onto the wire with a spacing of approximately 1 m (3,3 feet) between each clip.



PODAB Inc.
+1 (800) 683-4873
support.na@podab.com